

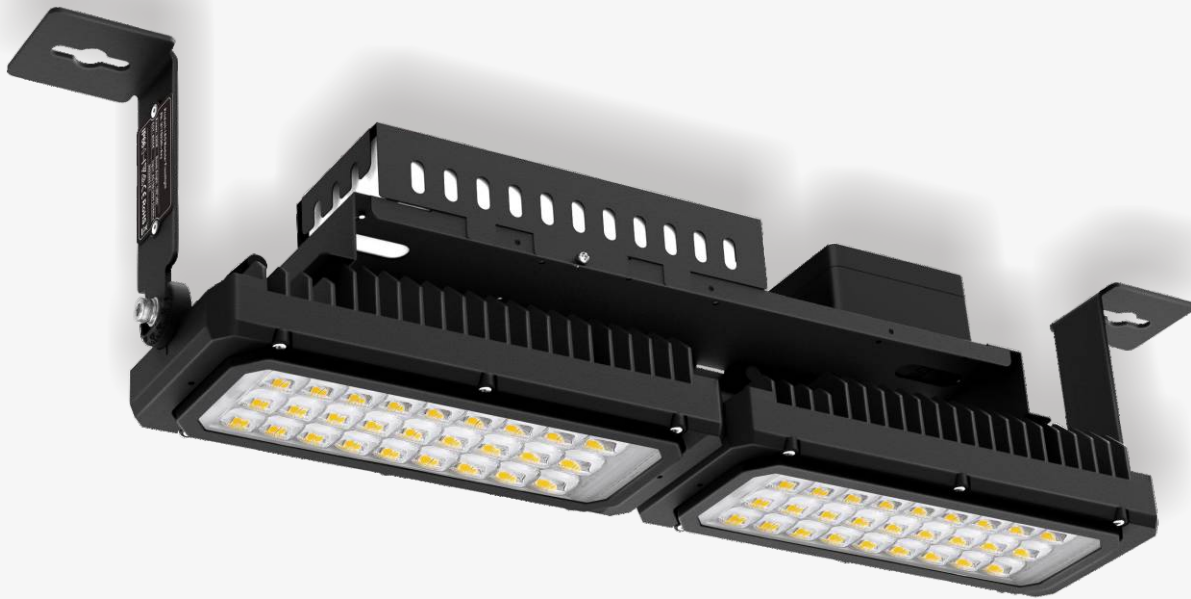


FTS

FORWARD THINKING SOLUTIONS

M17B.L/L-DC

Linear Modular Floodlight



***75W, 100W, 150W,
230W, 320W, 450W***

CB

**UK
CA**

CE

RoHS




IP66


IK10

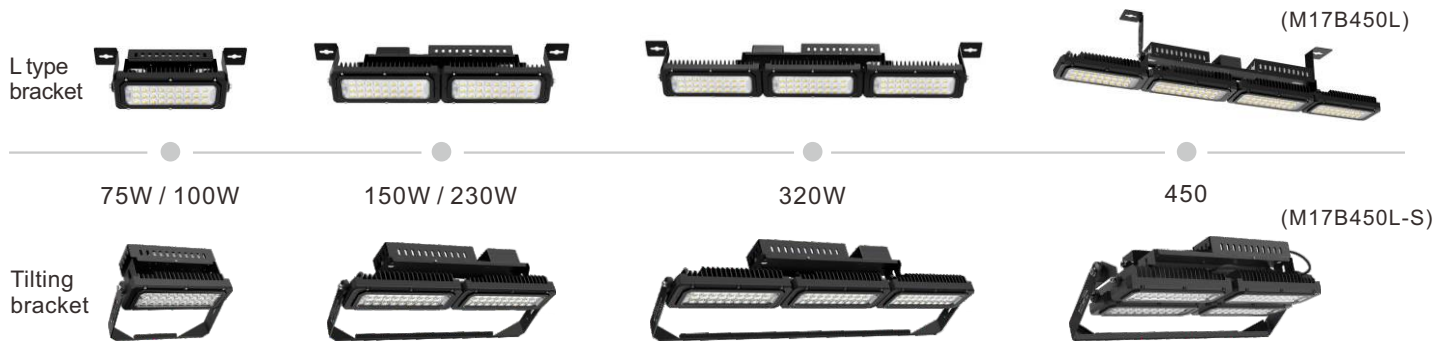

10KV

5
YEARS
WARRANTY

SPECIFICATION

Product: M17B.L/L-DC Linear Modular Floodlight

Part No.: M17B75L/L-DC, M17B100L/L-DC, M17B150L, M17B230L, M17B320L, M17B450L, M17B450L-S

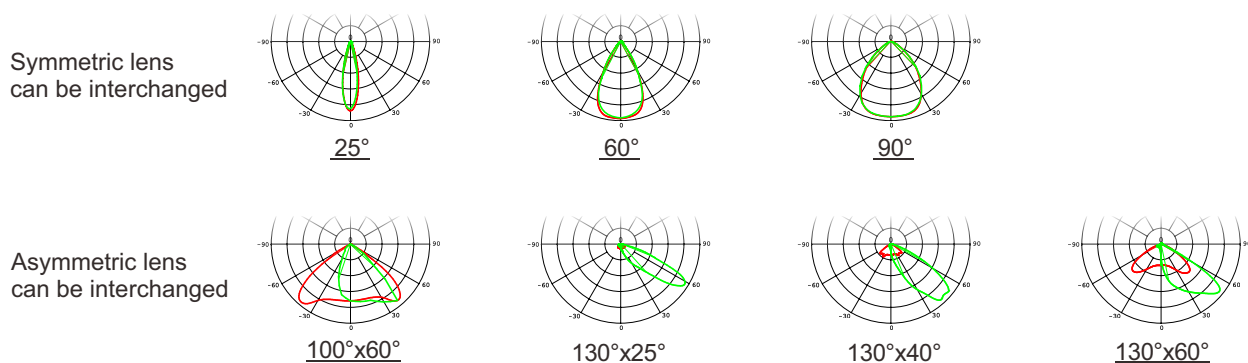


1. Main features

- Different beam angle: 25°, 60°, 90°symmetric, 100°x60°, 130°x25°, 130°x40°, 130°x60° Asymmetric.
- High light efficiency: 145~170 lm/W.
- Multi-installation ways, easy installation.
- IP66 & IK10 design, SDCM<3
- Meanwell / Inventronics waterproof driver available.
- Dali, 0/1-10V, PWM Dimmable available.
- Die-casting Aluminum housing with AkzoNobel powder coating.
- Long lifetime over 50,000 hrs, extremely low maintenance cost.
- 5 years warranty (M17B.L-DC: 3years warranty).

2. Luminous intensity distribution diagram

For the IES file, please contact us by E-mail.



3. Technical data

Model No.	M17B75L-25/60 /90/Asy	M17B100L-25/60 /90/Asy	M17B150L-25/60 /90/Asy	M17B230L-25/60 /90/Asy	M17B320L-25/60 /90/Asy	M17B450L-25/60 /90/Asy M17B450L-S-25/60 /90/Asy
Light Source	Seoul 5050					
Input Voltage	100-240VAC 50/60Hz					
LED Power(W)	66-72	92-95	134-146	212-219	292-312	408-442
System Power(W)	72-76	95-102	145-156	219-232	312-323	438-475
Luminous Flux(lm)	25°	11,800-12,600	15,200-16,200	23,000-24,600	34,400-36,800	48,400-51,600
	60°	11,600-12,400	14,900-15,800	23,400-24,900	33,400-35,500	49,600-50,000
	90°	11,900-12,700	15,400-16,400	23,800-25,400	34,200-36,600	48,300-51,500
100°x60° Asy	11,500-12,300	14,800-15,700	23,000-24,500	33,000-35,300	45,200-48,100	69,800-74,300
130°x25° Asy	11,000-11,800	14,300-15,400	21,700-23,200	33,300-35,700	44,900-48,200	63,500-68,000
130°x40° Asy	10,700-11,500	14,200-15,200	20,800-22,100	31,000-33,100	43,500-46,700	67,300-72,100
130°x60° Asy	10,400-11,200	13,500-14,600	20,900-22,400	30,200-32,500	42,300-45,500	64,300-68,700
Surge protection (CM/DM)	6/4KV	6/4KV	10/6KV	6/4KV	10/6KV	6/4KV
Optical Cover	PC Lens					
Power Factor	>0.95					
CCT (K)	3000/4000/5700					
CRI	>70					
THD (230VAC)	<20%					
Power Cable	75W~100W: 0.3m H05RN-F 3X1.0; 150~320W: 1.4m H05RN-F 3X1.0					

Model No.	M17B75L-DC-25/60 /90/Asy	M17B100L-DC-25/60 /90/Asy
Light Source	Seoul 5050	
Input Voltage	21-32DCV / 35-62DCV	
LED Power(W)	66-72	92-95
System Power(W)	72-76	95-102
Luminous Flux(lm)	25°	11,800-12,600
	60°	11,600-12,400
	90°	11,900-12,700
100°x60° Asy	11,500-12,300	14,800-15,700
130°x25° Asy	11,000-11,800	14,300-15,400
130°x40° Asy	10,700-11,500	14,200-15,200
130°x60° Asy	10,400-11,200	13,500-14,600
Optical Cover	PC Lens	
CCT (K)	3000/4000/5700	
CRI	>70	
Power Cable	H05RN-F 2X1.0	

*** Environmental conditions**

Working temperature: -20°C to +50°C

Working humidity (RH%) : 10-90.

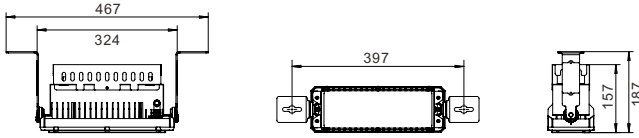
Qty of products to each Circuit Breaker

Model No.	B10	B16	C10	C16	D10	D16
M17B75L	3	9	5	14	10	16
M17B100L	5	8	8	14	17	27
M17B150L	3	4	5	8	8	12
M17B230L	1	2	2	4	5	9
M17B320L	2	3	3	6	4	8
M17B450L M17B450L-S	0	1	1	2	2	4

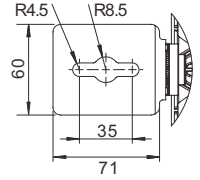
4 Dimensions (Unit: mm)

L type bracket

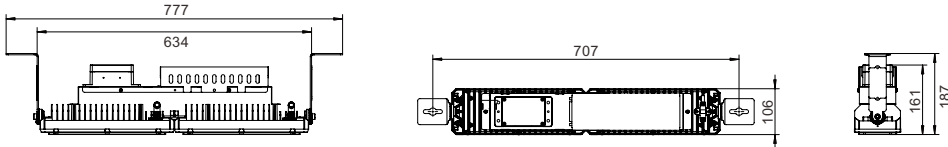
75W
100W



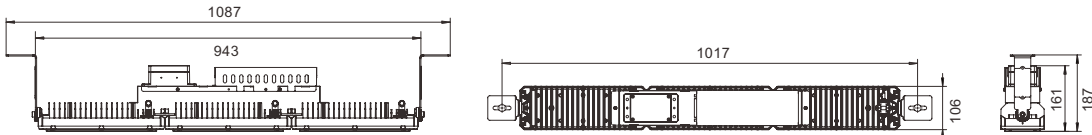
Installation base



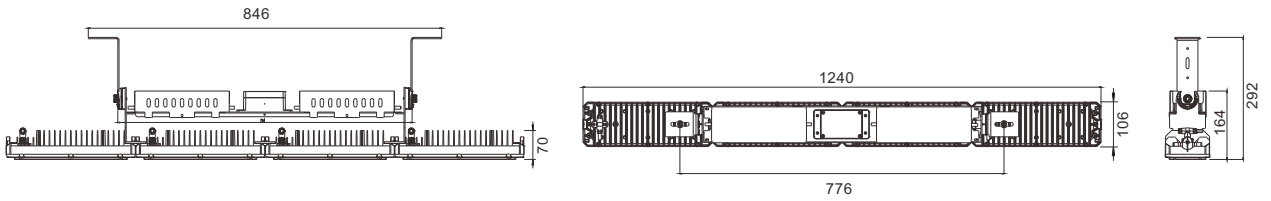
150W
230W



320W

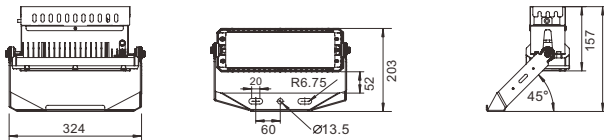


450W
(M17B450L)

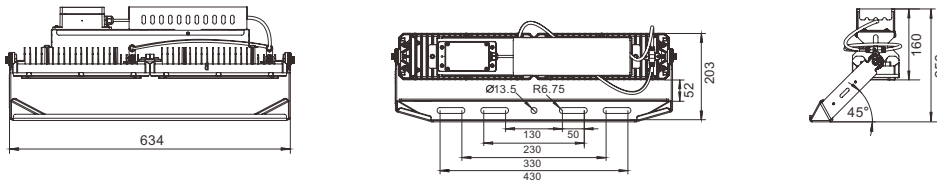


Tilting bracket

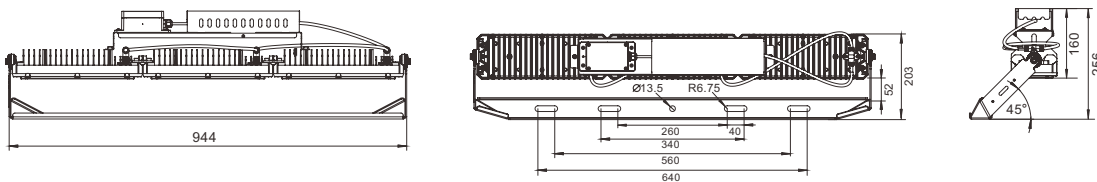
75W
100W



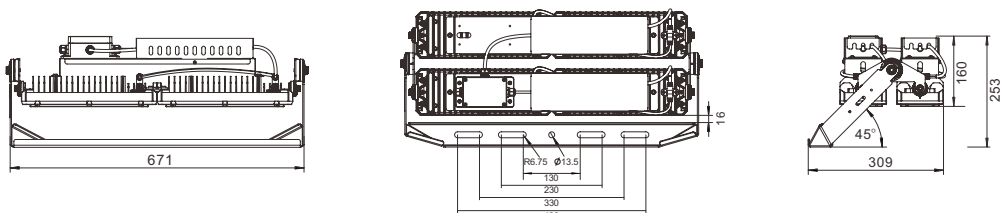
150W
230W



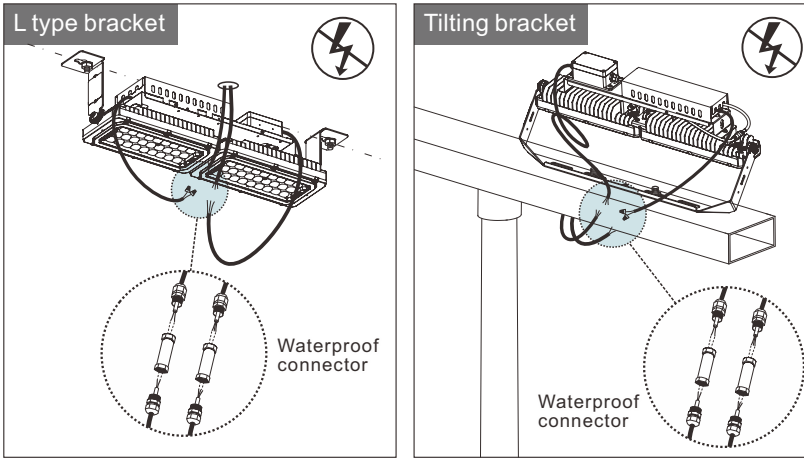
320W



450W
(M17B450L-S)



5. Installation



- Please confirm the type of bracket before placing orders.
- For details, please refer to Installation Instruction.
- Installation must be performed by qualified person.
- Disconnect before installation.
- Installation tools is not provided.



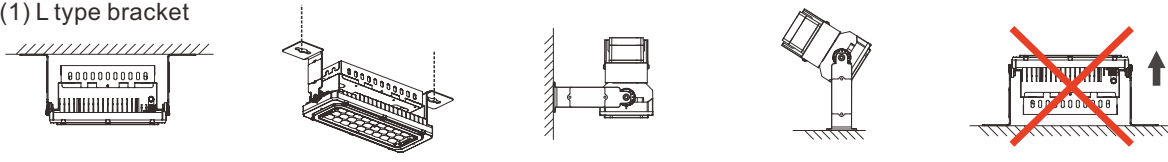
This products contains a light source of energy efficiency class <C> or <D>

6. Installation position:

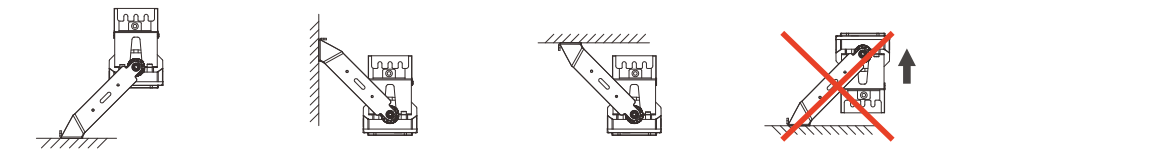
This Modular Floodlight can be installed on pole, wall, ceiling or on a horizontal surface.

Note: To avoid dust accumulation on the lens, DO NOT project upwards.

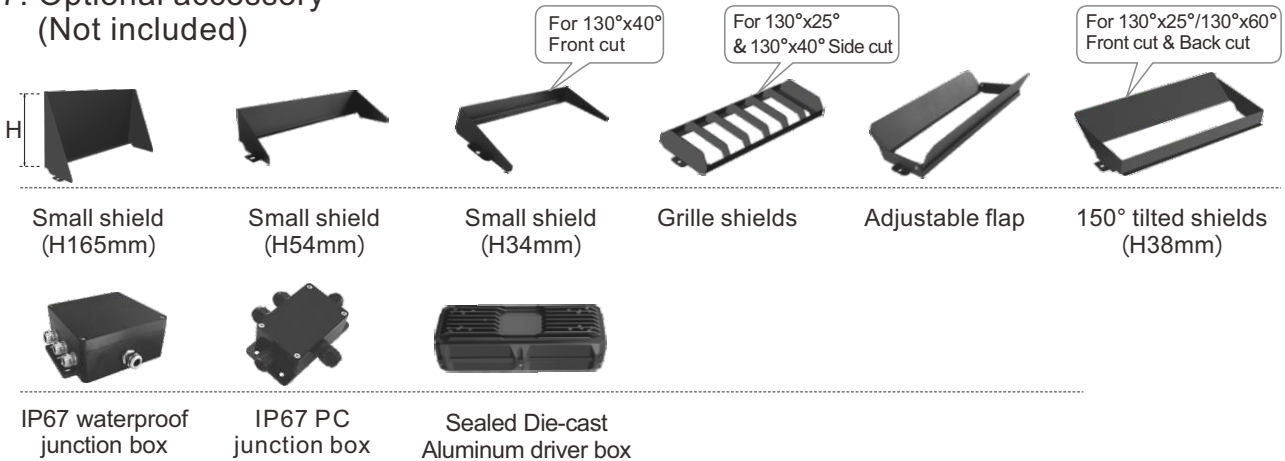
(1) L type bracket



(2) Tilting bracket



7. Optional accessory (Not included)



8. Package information

Model No.	75W / 100W	150W / 230W	320W	450W
L type bracket: Inner Box (mm)	390*155*220	700*155*220	1010*155*220	—
L type bracket: Outer Carton (cm)	41*33.5*47 (4pcs/CTN)	72*33.5*24.5 (2pcs/CTN)	103*33.5*24.5 (2pcs/CTN)	—
L type bracket: Net Weight (Kg)	3.1	5.3	7.3	11.2
Tilting bracket: Inner Box (mm)	365*200*290	700*155*295	1010*155*295	—
Tilting bracket: Outer Carton (cm)	43.5*38.5*62 (4pcs/CTN)	72*33.5*32 (2pcs/CTN)	103*33.5*32 (2pcs/CTN)	72*42*22.5 (1pcs/CTN)
Tilting bracket: Net Weight (Kg)	3.8	6.7	8.7	12.7



9. Application

Suitable for sports fields, factory, warehouse, office, supermarket, toll stations, gas stations, Tunnel, parking lot, etc.

